

CREATE YOUR OWN LEGACY



Year after Year
GROWTH, PROGRESS
AND TRANSFORMATION

Founded in 2017, ORO Group has rapidly emerged as a trusted name in the real estate industry, establishing its reputation within just eight years.

With a strong commitment to unmatched craftsmanship, unwavering quality, and a customer-oriented approach, the company has successfully delivered four landmark projects, while four more are nearing completion.

ORO Group takes pride in creating exceptional living spaces that blend modern design with superior amenities, ensuring the best value for its customers. With a vision to redefine urban living, the company continues to set new benchmarks in excellence and innovation.

The Legacy of Land

The story of this prestigious project begins with Mr. Vishwa Nath Singh, a distinguished landlord of Village Sarsawan, whose legacy was inherited by his son, Mr. Manoj Singh Chauhan.

With a visionary outlook, he laid the foundation for a strong real estate presence, transforming the family's heritage into a symbol of growth and prosperity. Today, this esteemed legacy is being carried forward by the Dynasty of ORO Group in collaboration with Casa Buildtech LLP a name synonymous with trust, excellence, and timeless value.

Investing with us is not just about buying property; it is about becoming part of a legacy that will be cherished for generations to come. It is more than just a building it is a foundation for dreams, a symbol of heritage, and a promise for a prosperous future.



2 & 3 BHK APARTMENTS

Arjunganj, Lucknow





Where
Happiness
lives on every floor



Build a
Legacy
Not Just a Home

Build a legacy at Dynasty with Oro.
Where exceptional living meets your highest aspirations, creating
a home that mirrors your success and vision for the future.

WHERE COMFORT
MEETS

Higher Standards

Experience a lifetime of cherished living with 20% construction and 80% open space, offering luxury, freedom, and tranquility in a home surrounded by natural beauty.

80%
OPEN SPACE

20%
CONSTRUCTION



ARTISTIC IMAGE

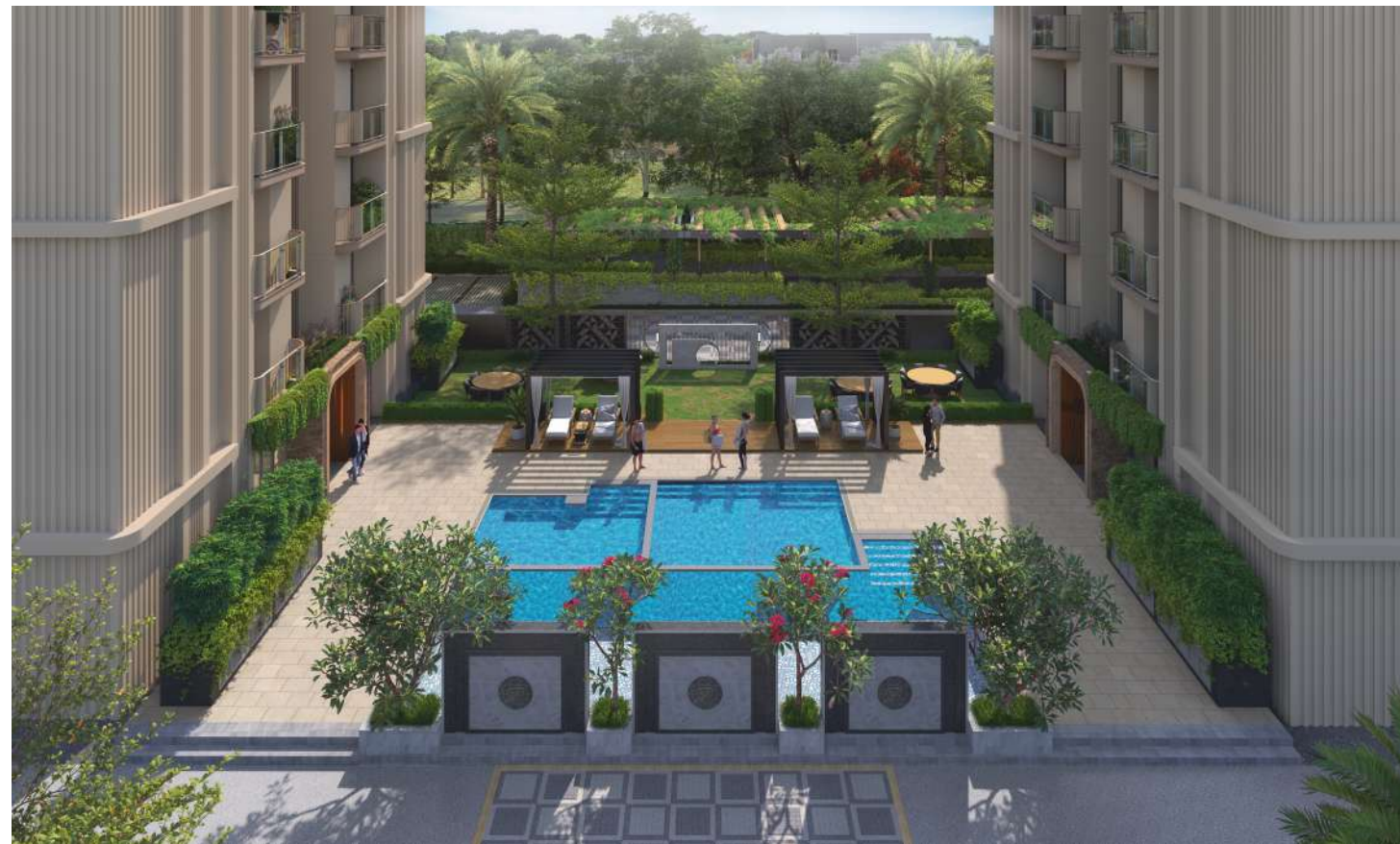


ARTISTIC IMAGE

STEP INTO *Grandeur*

What is life without a grand beginning?

At Dynasty by Oro, step into elegance with a magnificent lobby, complimented by three elevators in each tower, designed for your comfort.



WHERE EVERY
CORNER IS THOUGHTFULLY

Designed

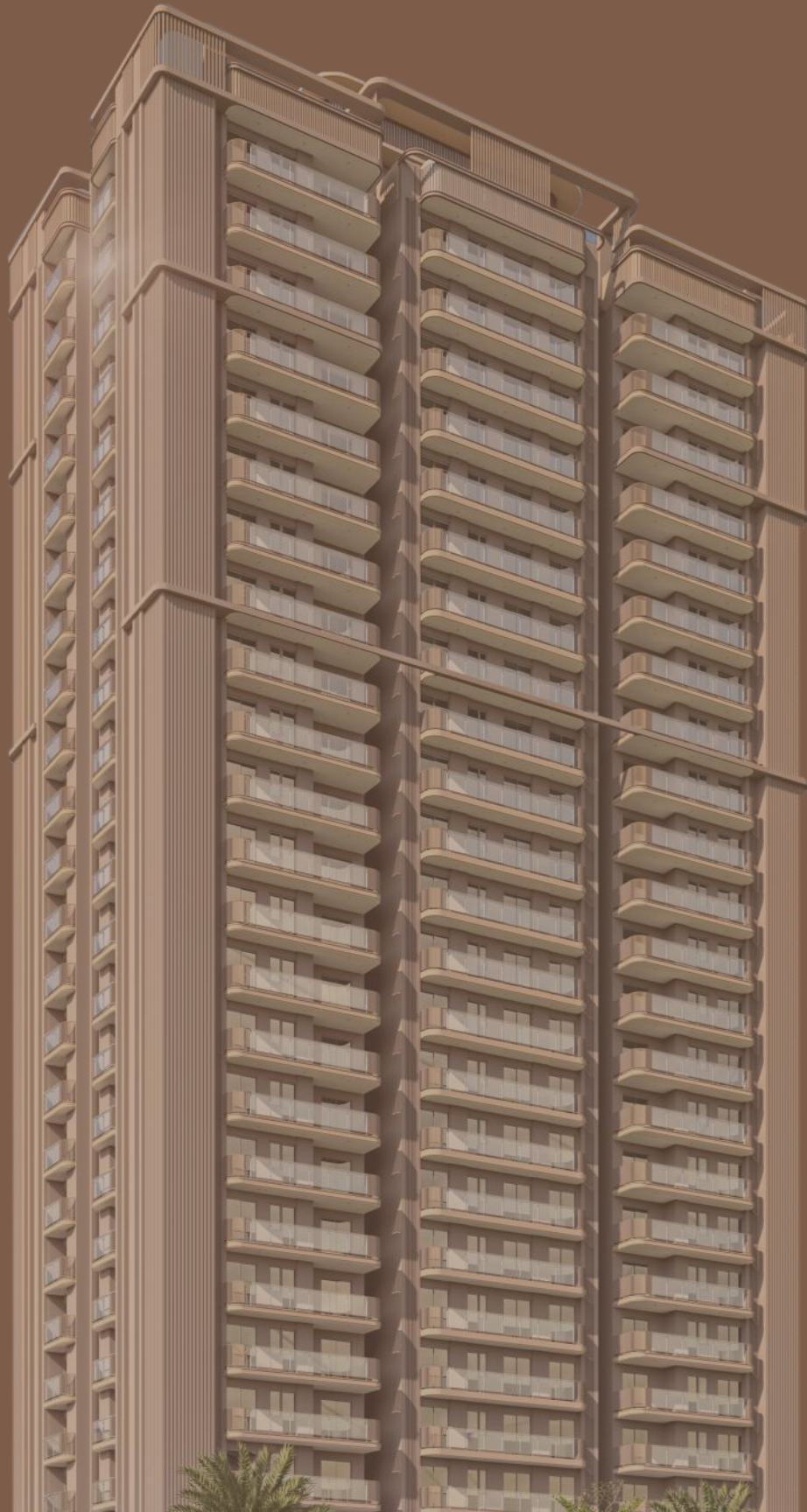
Dynasty Apartment offers 2 & 3 BHK homes, crafted with contemporary aesthetics and smart functionality. Each space is designed to compliment your modern lifestyle while ensuring maximum comfort and convenience.

WHERE
EVERYDAY FEELS
Extraordinary

Discover the perfect blend of comfort and luxury
with our 2 & 3 BHK apartments.

Thoughtfully designed to bring joy, convenience, and
vibrancy to your daily routine. Experience life
the way it's meant to be-enjoyable and fulfilling.

Unmatched Luxury with 34+ World-Class Amenities!



CLUB



GYMNASIUM



WATER CASCADE



SCULPTURE COURT



SENIOR CITIZEN PARK



GAZEBO



HALF BASKETBALL COURT



AMPLE CAR PARKING



DROP OFF ZONE



JOGGING TRACK



AMPHITHEATRE



KIDS PARK



VERTICAL GARDEN



PAVILION



LANDSCAPE SITOUT



PARTY LAWN



SPACIOUS BALCONIES



CELEBRATION DECK



FRAGRANCE GARDEN



COMMERCIAL PLAZA



SWIMMING POOL



KIDS' POOL



HYDRO THERAPY POOL



PARTY DECK



Swimming Pool

A UNIQUE GLOW POOL
TO INDULGE IN
AT THE PODIUM LEVEL

ARTISTIC IMAGE



Club IMPERIAL

Club Imperial is a luxurious retreat offering exclusive amenities, from a cutting-edge fitness center and vibrant party hall to pool tables and a dedicated kids' play area, all designed to elevate your lifestyle and create unforgettable experiences.

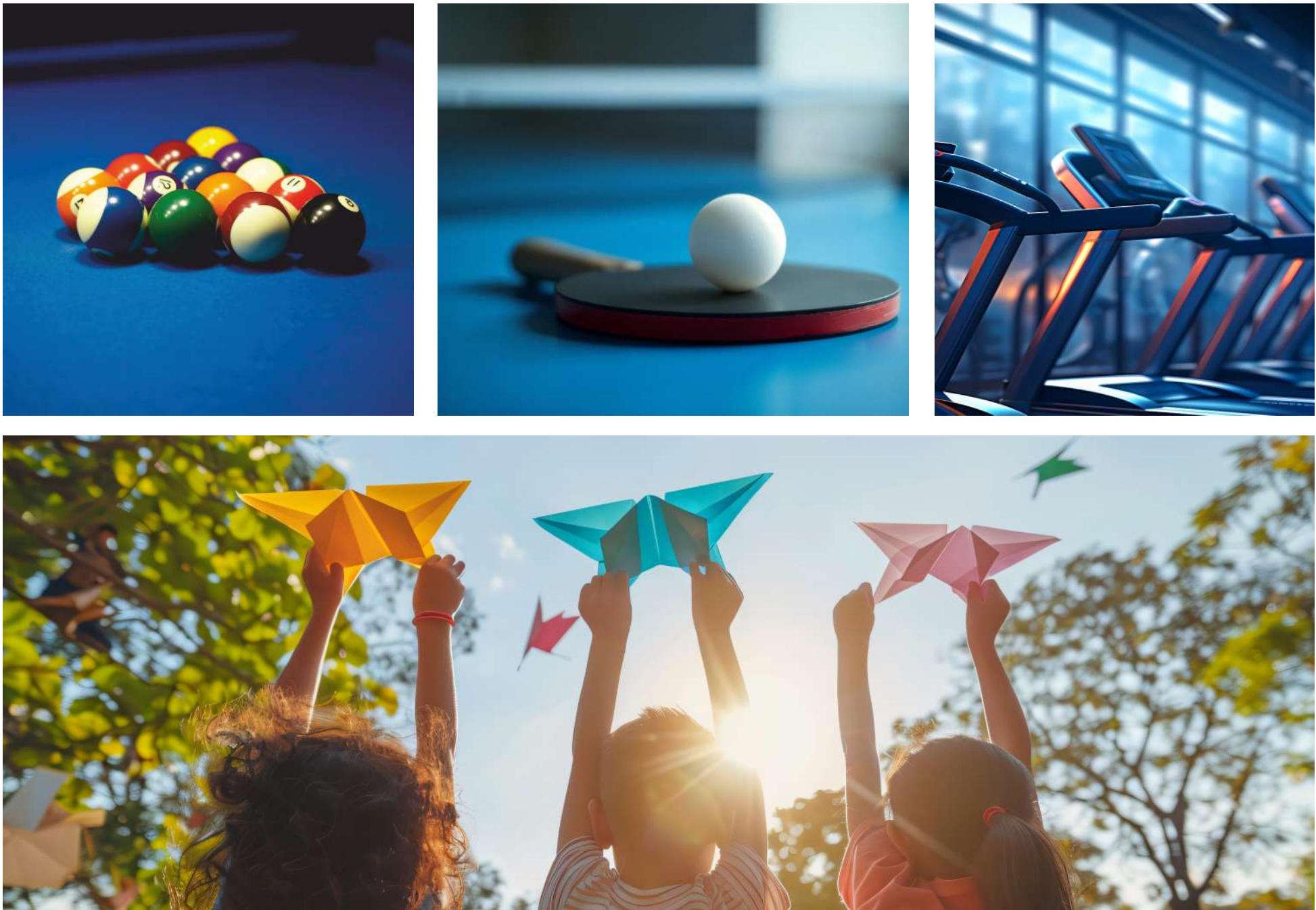
The Perfect Place to
PLAY, RELAX, AND UNWIND

CLUB AMENITIES



REFERENCE IMAGE

WHERE TIME BECOMES TIMELESS



REFERENCE IMAGES

WHERE LITTLE
SWIMMERS MAKE

Big Memories

The children's pool offers a safe and fun-filled space for young ones to splash, play, and enjoy their time in the water.



ARTISTIC IMAGE

PLUSH INTERIORS

Lush Exteriors

Experience the perfect blend of opulence with Plush Interiors and Lush Exteriors at Dynasty by ORO. Inside, enjoy spacious, elegantly designed interiors that offer both comfort and style.

Outside, be captivated by modern exteriors that elevate the skyline and reflect your distinguished lifestyle.

SITE LAYOUT PLAN



LEGEND

GENERAL

- 01. ENTRANCE PLAZA
- 02. SIGNAGE WALL
- 03. GUARD ROOM
- 04. WELCOME PLAZA
- 05. WATER CASCADE
- 06. SCULPTURE COURT
- 07. DRIVEWAY
- 08. PARKING
- 09. TOWER DROP OFF
- 10. CLUB DROP OFF
- 11. JOGGING TRACK

LANDSCAPING

- 12. AMPHITHEATRE
- 13. KIDS PARK
- 14. SAND PIT
- 15. CELEBRATION LAWN
- 16. FRAGRANCE GARDEN
- 17. GET TOGETHER GAZEBO
- 18. SENIOR CITIZEN LAWN
- 19. HEALTH PARK
- 20. HALF BASKETBALL COURT
- 21. PATHWAY
- 22. OXY GARDEN
- 23. FOREST GARDEN
- 24. FEATURE WALL
- 25. VERTICAL GARDEN
- 26. PAVILION
- 27. LANDSCAPE SITOUT

CLUBBING

- 28. CLUB
- 29. PARTY LAWN
- 30. SWIMMING POOL
- 31. KIDS' POOL
- 32. HYDRO THERAPY POOL
- 33. PARTY DECK

COMMERCIAL

- 34. COMMERCIAL PLAZA (ORO EMPORIO)
- 35. RETAIL COURT

TYPICAL FLOOR PLAN



*The areas mentioned are based on architectural drawings.

UNIT PLAN - 1,2,3 & 4



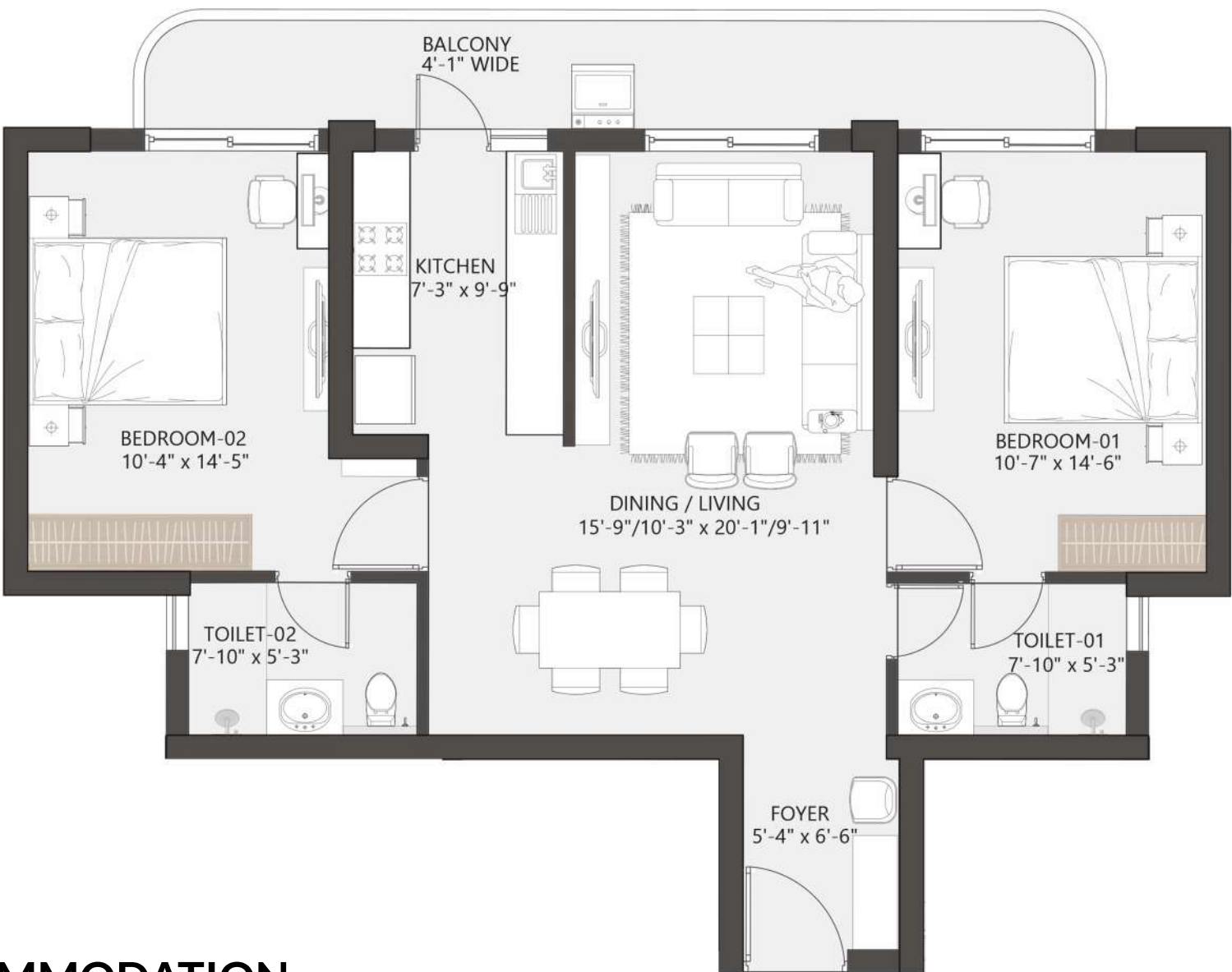
ACCOMMODATION 3BHK + DRAWING + DINING + KITCHEN + 3 TOILET + DRESSING + 3 BALCONY

| | |
|---------------|-----------------------------------|
| Carpet Area | 989.09 Sq. Ft. (91.88 Sq. Mtr.) |
| Balcony Area | 214.20 Sq. Ft. (19.90 Sq. Mtr.) |
| Built-Up Area | 1097.00 Sq. Ft. (101.91 Sq. Mtr.) |
| Super Area* | 1715.00 Sq. Ft. (159.32 Sq. Mtr.) |

*For reference only

*The areas mentioned are based on architectural drawings.

UNIT PLAN - 6



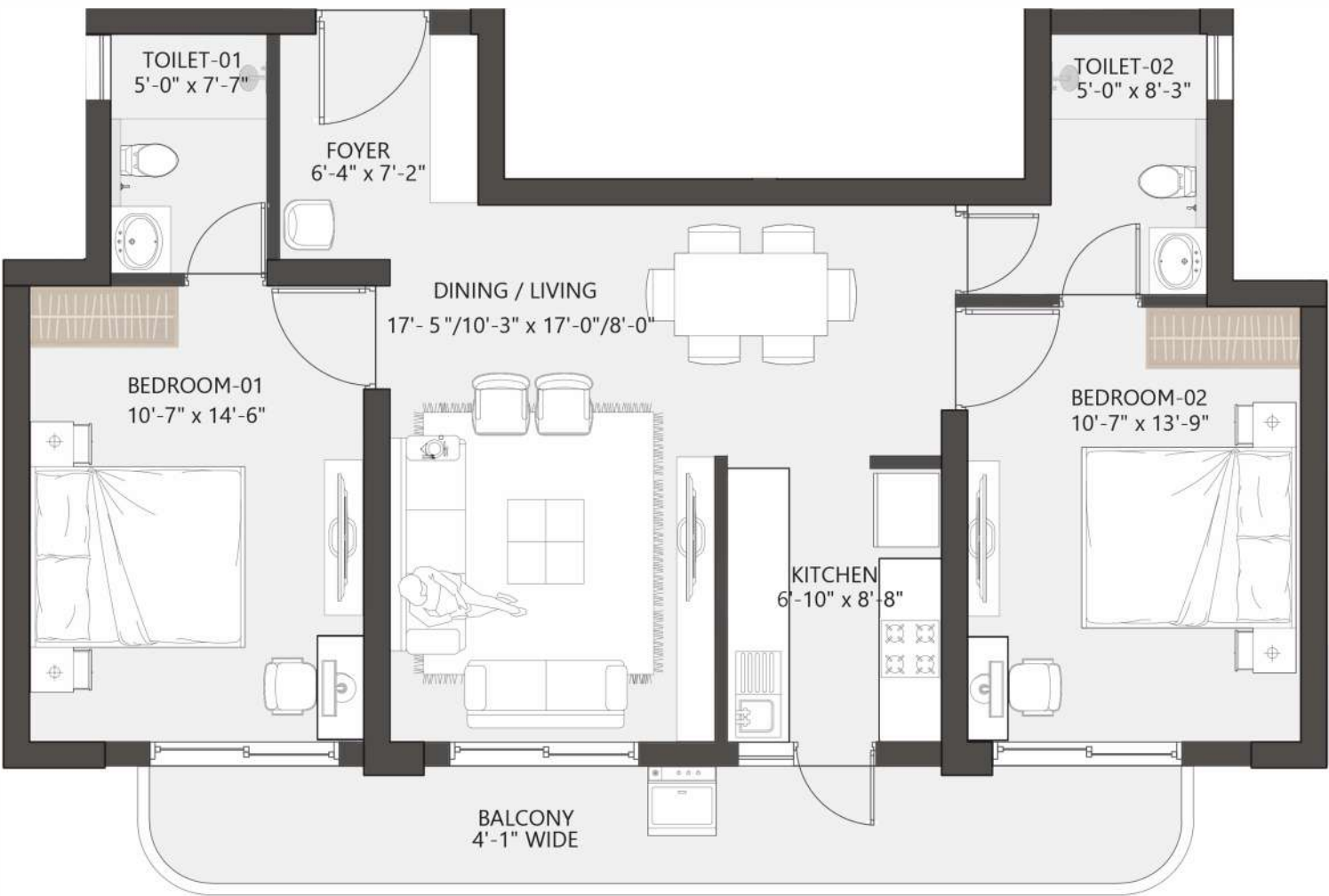
ACCOMMODATION 2BHK + DRAWING + DINING + KITCHEN + 2 TOILET

| | |
|---------------|-----------------------------------|
| Carpet Area | 812.14 Sq. Ft. (75.45 Sq. Mtr.) |
| Balcony Area | 135.19 Sq. Ft. (12.56 Sq. Mtr.) |
| Built-Up Area | 918.00 Sq. Ft. (85.28 Sq. Mtr.) |
| Super Area* | 1380.00 Sq. Ft. (128.20 Sq. Mtr.) |

*For reference only

*The areas mentioned are based on architectural drawings.

UNIT PLAN - 5



ACCOMMODATION 2BHK + DRAWING + DINING + KITCHEN + 2 TOILET

| | |
|---------------|-----------------------------------|
| Carpet Area | 764.24 Sq. Ft. (71.00 Sq. Mtr.) |
| Balcony Area | 134.87 Sq. Ft. (12.53 Sq. Mtr.) |
| Built-Up Area | 870.00 Sq. Ft. (80.82 Sq. Mtr.) |
| Super Area* | 1320.00 Sq. Ft. (122.63 Sq. Mtr.) |

*For reference only

*The areas mentioned are based on architectural drawings.



PREMIUM SPECIFICATIONS



MASTER BEDROOM

Flooring/Skirting: Wooden Laminated Flooring
Wall Finishes: Plastic Emulsion on POP punning
Ceiling Finishes: Oil Bound Distemper

BEDROOMS

Flooring/Skirting: Vitrified Tiles 600x600 mm size
Wall Finishes: Plastic Emulsion on POP punning
Ceiling Finishes: Oil Bound Distemper

Living/Dining Room

Flooring/Skirting: Superior quality Vitrified Tiles of Minimum 600x1200 mm size
Wall Finishes: Plastic Emulsion on POP punning
Ceiling Finishes: Oil Bound Distemper

Toilets

Flooring/Skirting: Vitrified/Antiskid Ceramic Tiles
Wall Finishes: Ceramic Wall Tiles upto Dado Level (approx. 2400 mm)
Ceiling Finishes: False Ceiling
CP Fitting: Jaguar/Hindware or Equivalent Toilet Fitting in all Toilets
Other: Counter: Granite / Tile | **Sanitary Ware:** Premium Quality Range
Partition: Glass Partition in Master Toilet

Kitchen

Flooring/Skirting: Vitrified/Antiskid Ceramic Tiles
Wall Finishes: Acrylic Emulsion Paint on Walls, Dado 2' Tiles above Kitchen Counter
Ceiling Finishes: Oil Bound Distemper
CP Fittings & Accessories: Sink Mixer & provision for Geyser Fixing
Other: Granite/Tile working platform & double bowl kitchen sink

Super Structure

Basement in RCC framed structure & Floors monolithic RCC structure

Staircase Main &
Staircase Fire

Flooring: Marble/Granite/Tiles | **Skirting/Dado:** Same as Flooring
Wall Finishes: Oil Bound Distemper
Ceiling Finishes: Oil Bound Distemper
Other: Railing: MS Railing

Balcony

Flooring/Skirting: Antiskid Tiles
Wall Finishes: Exterior Paint
Ceiling Finishes: Exterior Paint
Other: Railing: Combination of Glass/RCC as per the requirement of Elevation

Door & Windows

Main Entrance Door: 8' Height Decorative Flush/Engineered Painted/Laminated Door with steam beach wood/engineered door frame
Internal Doors: 7' Height Flush/Engineered Painted/Laminated Door With Steam Beach Wood/Engineered Door Frame
Hardware: Good Quality Door Handles & Knobs / Locks
Windows: Power coated aluminum Frame Windows with Clear Glass
Others: Video Door Phone on Main Entrance Door

Façade

Exterior Grade Paint from Reputed makes & brands

Electrical Wiring &
Installation

Fixtures & Fittings: ISI mark Switches/Sockets, Distribution boxes & circuit breakers from standard makes & brands
Wiring: ISI mark concealed conduits with copper wire
Plumbing: ISI mark CPVC water supply pipes with Standard Valves & Accessories
Security System for Project: CCTV surveillance would be provided, Internal communication system & Video Door Phones



SCAN QR TO VIEW
PROJECT LOCATION

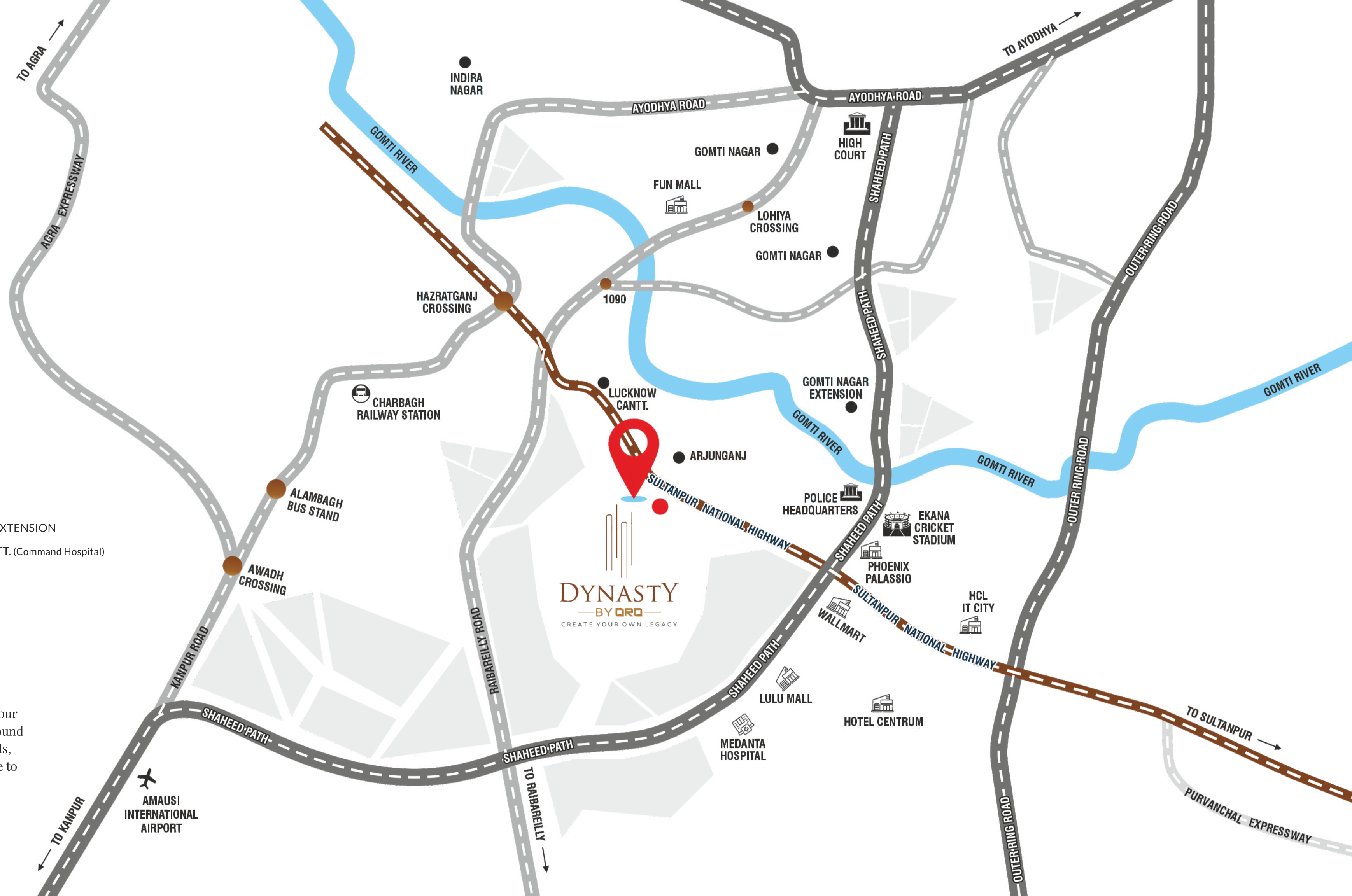


KEY DISTANCE

| | | | |
|-----------------------|---------|---------|-----------------------------------|
| SHAHEED PATH | 02 MINS | 08 MINS | GOMTI NAGAR EXTENSION |
| EKANA CRICKET STADIUM | 04 MINS | 08 MINS | LUCKNOW CANTT. (Command Hospital) |
| PHOENIX PALASSIO MALL | 04 MINS | 10 MINS | HAZARATGANJ |
| LULU MALL | 05 MINS | 10 MINS | KISAN PATH |
| MEDANTA HOSPITAL | 06 MINS | 15 MINS | AIRPORT |

CONVENIENCE UP CLOSE

At Dynasty by Oro, you are conveniently located with all your social, educational, entertainment, and daily needs just around the corner. You are just a stone's throw away from schools, colleges, markets, malls, and multiplexes. Living this close to convenience makes your life smoother and better.





Corporate Office: 801, 8th Floor, Eldeco Corporate Tower,
Vibhuti Khand, Gomti Nagar, Lucknow - 226010 | Web.: www.orongroup.in

Site Office: Arjunganj, Sultanpur Road, Lucknow

Call: **89 5017 5017** | www.orongroup.in

Project RERA Regn. No.: **UPRERAPRJ469558/12/2024** | RERA Website: www.up-rera.in

ACCOUNT DETAILS: Name of the Account: **ORI Collection A/c for Dynasty By ORO**

Account No.: **43378037770** | Bank Name: State Bank Of India | Branch Name: Commercial Branch, Gokhale Marg | IFSC Code: SBIN0004166



ASSOCIATION WITH

